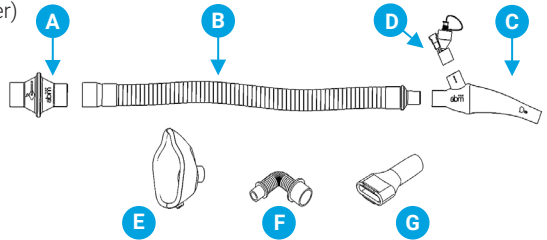
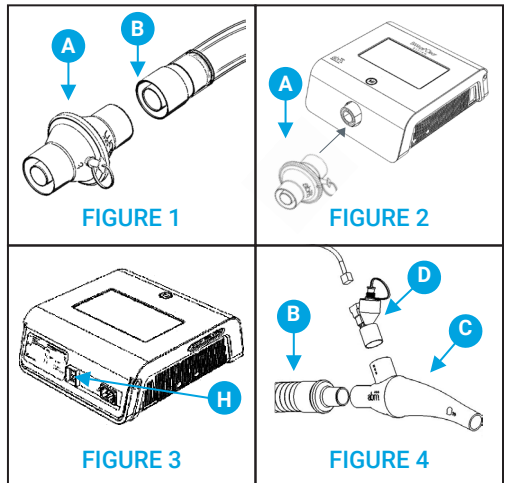


### Dual Lumen Breathing Circuit

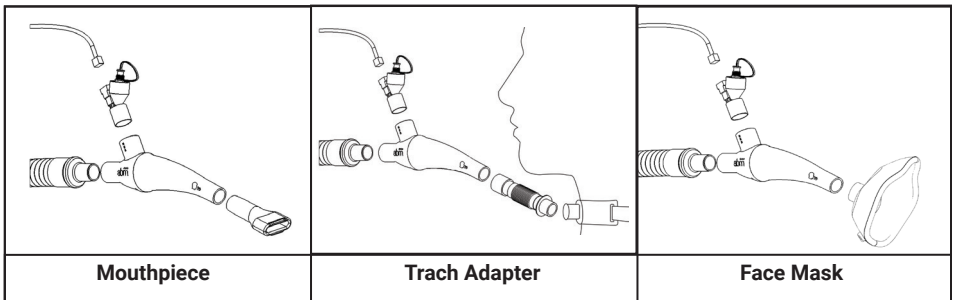
- A. Coaxial Bacterial/Viral Filter (B/V Filter)
- B. Coaxial Tubing
- C. Handset
- D. Aerogen® Solo Nebulizer
- E. Face Mask (optional)
- F. Trach Adapter (optional)
- G. Mouthpiece (optional)



1. Attach the larger end of the coaxial tube (B) to the end of the coaxial B/V filter (A) that has the company logo as shown in **FIGURE 1**.
2. Attach the end of the B/V filter (A) that has the oxygen port to the patient port of the control unit as shown in **FIGURE 2**.
3. On the back of the control unit, locate the power switch (H) as shown in **FIGURE 3**. Flip the power switch to the ON position.
4. Connect the smaller end of the coaxial tube (B) to the end of the handset (C) closest to the nebulizer port. Then, insert the Aerogen® Solo nebulizer (D) to the nebulizer port of the handset (C) as shown in **FIGURE 4**. Then attach the patient interface as shown below.



### Patient Interface



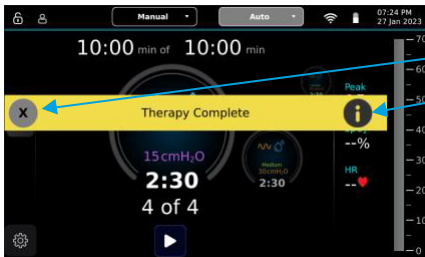
# Auto Therapy Mode



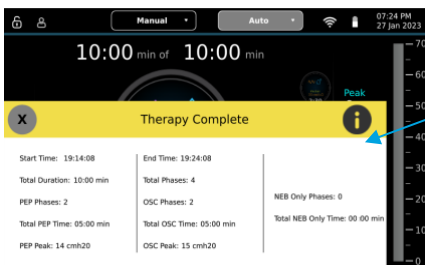
1. The system shows the last therapy used by default. If profiles are setup, you can select a profile from the dropdown list under Auto.
2. To start therapy, press the play/start icon on the bottom of the screen.



3. The current phase of therapy being delivered is shown in the center circle and the upcoming phases are the smaller circles to the right. The therapy timer is displayed on the top.
4. You can pause the therapy at any time by pressing the pause icon on the bottom of the screen.



5. Once the therapy ends, a therapy complete ribbon will appear. You can select to view the therapy details by pressing the i icon or close the ribbon by pressing the x icon.

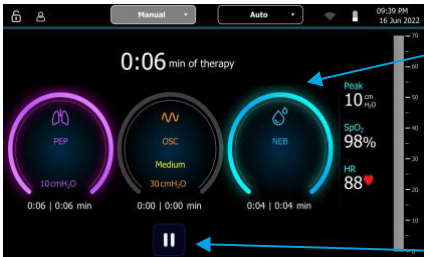


6. If you view the therapy details, you will see the peak PEP and OSC pressures, total number of phases and phase time.

# Manual Therapy Mode



1. The circles in the middle represent different therapy phases. First press the start/play icon on the bottom of the screen to engage the blowers.

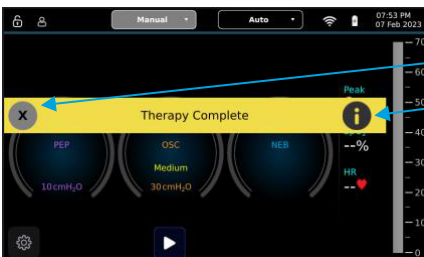


2. Press the therapy phase you want to run, PEP and OSC can be run with or without the NEB. NEB can be run alone as well. A color will illuminate around a phase when it is active. Under the active phase circle, a timer will appear showing the amount of time the current phase has been running and the total phase time. On the top of the screen is the total therapy time.

3. You can pause the therapy at any time by pressing the pause icon on the bottom of the screen.



4. To change the phase settings while the therapy is running, press and hold a phase to open the settings window. Adjustment to the settings will occur real time. Press the green check mark to save the adjustments.



5. After the therapy has ended, a Therapy Complete ribbon will be displayed on the screen. You can view the summary of the therapy by pressing the i icon or close the ribbon by pressing the x icon.

## Cleaning and Maintenance



**WARNING** - Remove the power cord from the device and wall outlet before cleaning the control unit.

The control unit's exterior surface should be cleaned before and after each patient use, and more often if needed.

Unplug the control unit from the power source and clean the front panel and exterior of the enclosure (excluding Dual Lumen Breathing Circuit). You can also clean the power cable when it is not plugged in. Use one of the following cleaning agents:

- A clean cloth dampened with water and a mild detergent.
- 70% Isopropyl alcohol or similar alcohol based towelettes used for medical devices with less than 70% Isopropyl alcohol.
- 10% Chlorine bleach solution

Inspect the control unit and power cord for damage after cleaning. Replace any damaged parts. Allow the device to dry completely before plugging in the power cord.

For detailed Warning and Caution statements, and operating instructions see the BiWaze® Clear System User Manual (BK0381).

---

BiWaze® and ABM Respiratory Care® are trademarks of ABMRC, LLC.  
©2023 ABMRC, LLC. ALL RIGHTS RESERVED. BK388 Rev 2.0 MAR-2023 ENG

For further information about this product or a service, visit our webpage:  
[www.abmrc.com](http://www.abmrc.com) or call customer support: 1-877-ABMRC01 (877-226-7201)