



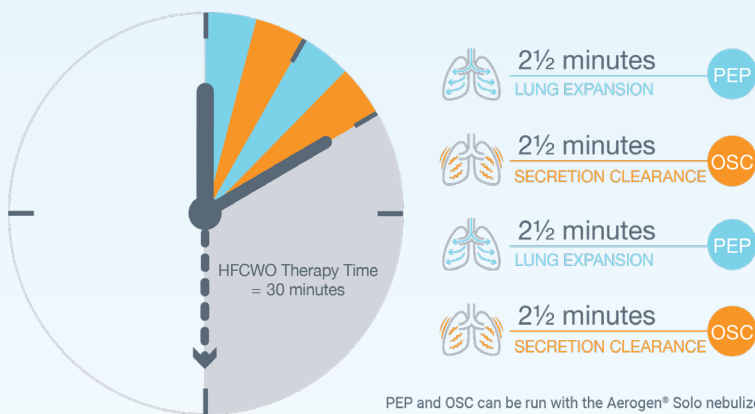
How does the BiWaze Clear System work?

BiWaze® Clear System provides oscillating lung expansion (OLE) therapy to help treat and prevent atelectasis, remove retained secretions from deep in the lungs and reduce work of breathing.



BiWaze Clear expands and clears the airways through a combination of airway clearance therapies in just 10 minutes. Alternating therapies of lung expansion and high frequency oscillation combined with nebulization helps calm inflamed airways and thin mucus.

BiWaze® Clear Therapy = 10 minutes*



Differentiators

- Closed circuit design with an Aerogen® Solo nebulier
- Dual air-path control to separate inhaled and exhaled air
- Stored therapy profiles (up to 10)
- Advance therapy programming to customize each therapy phase
- Touchscreen control
- Light weight system (9 lbs)
- Includes a lithium-ion battery with each device



REDUCTION IN POSTOPERATIVE PULMONARY COMPLICATIONS WITH OLE THERAPY

Research shows that OLE therapy reduced the rate of postoperative pulmonary complications (PPCs) in high-risk patients as classified by the American Society of Anesthesiologists (ASA). PPCs may result in morbidity, mortality and healthcare expenditures.¹

REDUCTION IN POSTOPERATIVE PULMONARY COMPLICATIONS

31%↓

FROM 22.9% DOWN TO 15.8%
ALL PATIENTS

45%↓

FROM 48.6% DOWN TO 26.9%
PATIENTS WITH ASA 4/5

REDUCTION IN LENGTH OF STAY

2.0↓

ICU DAYS

1.6↓

HOSPITAL DAYS

1. Huynh TT, Liesching TN, Cereda M, Lei Y, Frazer MJ, Nahouraii MR, Diette GB. Efficacy of Oscillation and Lung Expansion in Reducing Postoperative Pulmonary Complication. J Am Coll Surg. 2019 Nov;229(5):458-466.e1. doi: 10.1016/j.jamcollsurg.2019.06.004. Epub 2019 Jul 27. PMID: 31362061.

RESOURCES



website



overview

TARGET PATIENT POPULATION

BiWaze Clear can be used throughout the continuum of care, hospital to home for pediatric and adult patients.

DEPARTMENTS

- Emergency Department
- Trauma
- Surgery
- Intensive Care Units

PATIENT CONDITIONS

- Pneumonia
- Trauma
- Burn
- Stroke
- Shallow breathing / hypoventilation
- Inadequate airflows
- Mucus plugging
- Pain associated with chest wall injury or incisions
- Pulmonary exacerbation
- Postoperative pulmonary complications

BiWaze® and ABM Respiratory Care® are registered trademarks of ABMRC, LLC.

©2023 ABMRC, LLC. ALL RIGHTS RESERVED. PRTN-1585539264-527 Rev 1.0 APR-2023 ENG US

For further information about this product or a service, visit our webpage: www.abmrc.com or call customer support: 1-877-ABM-RC01 (877-226-7201)

abm
RESPIRATORY CARE